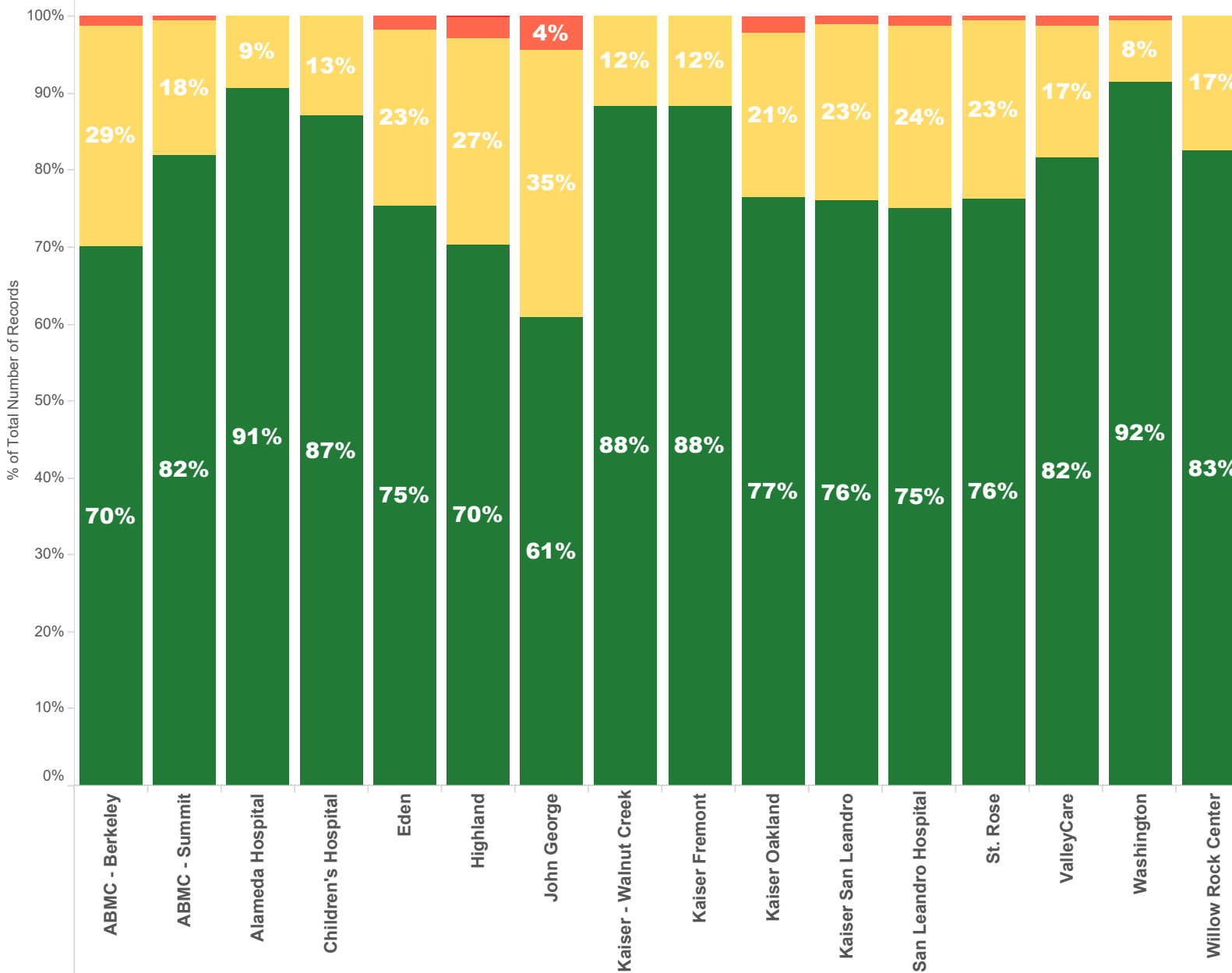


July 2018

NOTE: The **90th percentile** is the value for which 90% of the data points are smaller.

Destination Facility	Rank (Composite)	Avg. TOC	90th Percentile TOC	APOD >60 min	APOD % of N	N = Number of Transports
Kaiser - Walnut Creek	3	12 min.	23.0 min.	0	0%	180
ABMC - Berkeley	11	18 min.	37.0 min.	6	1%	519
John George	13	22 min.	46.0 min.	20	4%	454
Alameda Hospital	1	9 min.	20.0 min.	0	0%	194
Children's Hospital	4	10 min.	24.2 min.	0	0%	85
San Leandro Hospital	9	16 min.	31.7 min.	7	1%	634
Washington	3	12 min.	20.0 min.	4	0%	802
Kaiser Fremont	2	12 min.	22.0 min.	0	0%	448
ABMC - Summit	6	14 min.	26.0 min.	6	1%	1,112
ValleyCare	8	14 min.	26.0 min.	6	1%	541
Kaiser Oakland	10	16 min.	30.0 min.	13	2%	599
Kaiser San Leandro	7	16 min.	29.0 min.	7	1%	697
Eden	10	16 min.	30.8 min.	16	2%	893
Highland	12	19 min.	38.0 min.	38	3%	1,296
St. Rose	5	16 min.	29.0 min.	2	0%	437
Willow Rock Center	9	13 min.	23.8 min.	1	4%	23

July 2018



APOT Occurrence Bins

- 121-180 Min.
- 61-120 Min.
- 21-60 Min.
- <20 Min.

NOTE: APOT Occurrence bins conform to the APOT-2 specification as approved by EMS Commission 12-14-16 (Rev 11-17-2016)

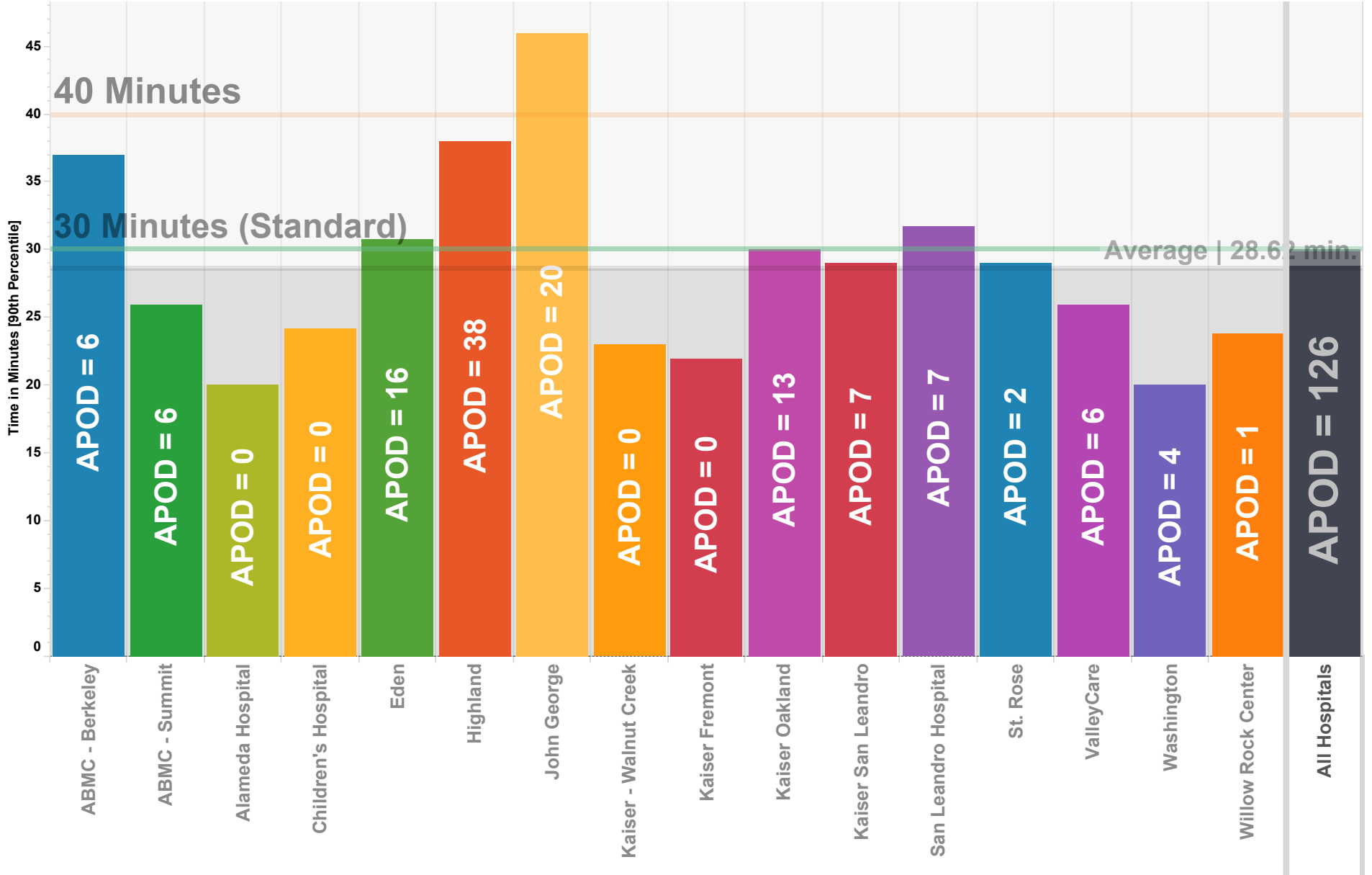
July 2018

	ABMC - Berkeley	ABMC - Summit	Alameda Hospital	Children's Hospital	Eden	Highland	John George	Kaiser - Walnut Creek	Kaiser Fremont	Kaiser Oakland	Kaiser San Leandro	San Leandro Hospital	St. Rose	ValleyCare	Washington	Willow Rock Center
APOT Occurrence Bins																
<20 Min.	70.1% 364	82.0% 912	90.7% 176	87.1% 74	75.5% 674	70.4% 912	61.0% 277	88.3% 159	88.4% 396	76.6% 459	76.2% 531	75.1% 476	76.4% 334	81.7% 442	91.6% 735	82.6% 19
21-60 Min.	28.7% 149	17.5% 195	9.3% 18	12.9% 11	22.8% 204	26.8% 347	34.6% 157	11.7% 21	11.6% 52	21.4% 128	22.8% 159	23.8% 151	23.1% 101	17.2% 93	7.9% 63	17.4% 4
61-120 Min.	1.2% 6	0.4% 5			1.7% 15	2.7% 35	4.4% 20			2.0% 12	1.0% 7	1.1% 7	0.5% 2	1.1% 6	0.5% 4	
121-180 Min.						0.2% 2										

NOTE: APOT Occurrence bins conform to the APOT-2 specification as approved by EMS Commission 12-14-16 (Rev 11-17-2016)

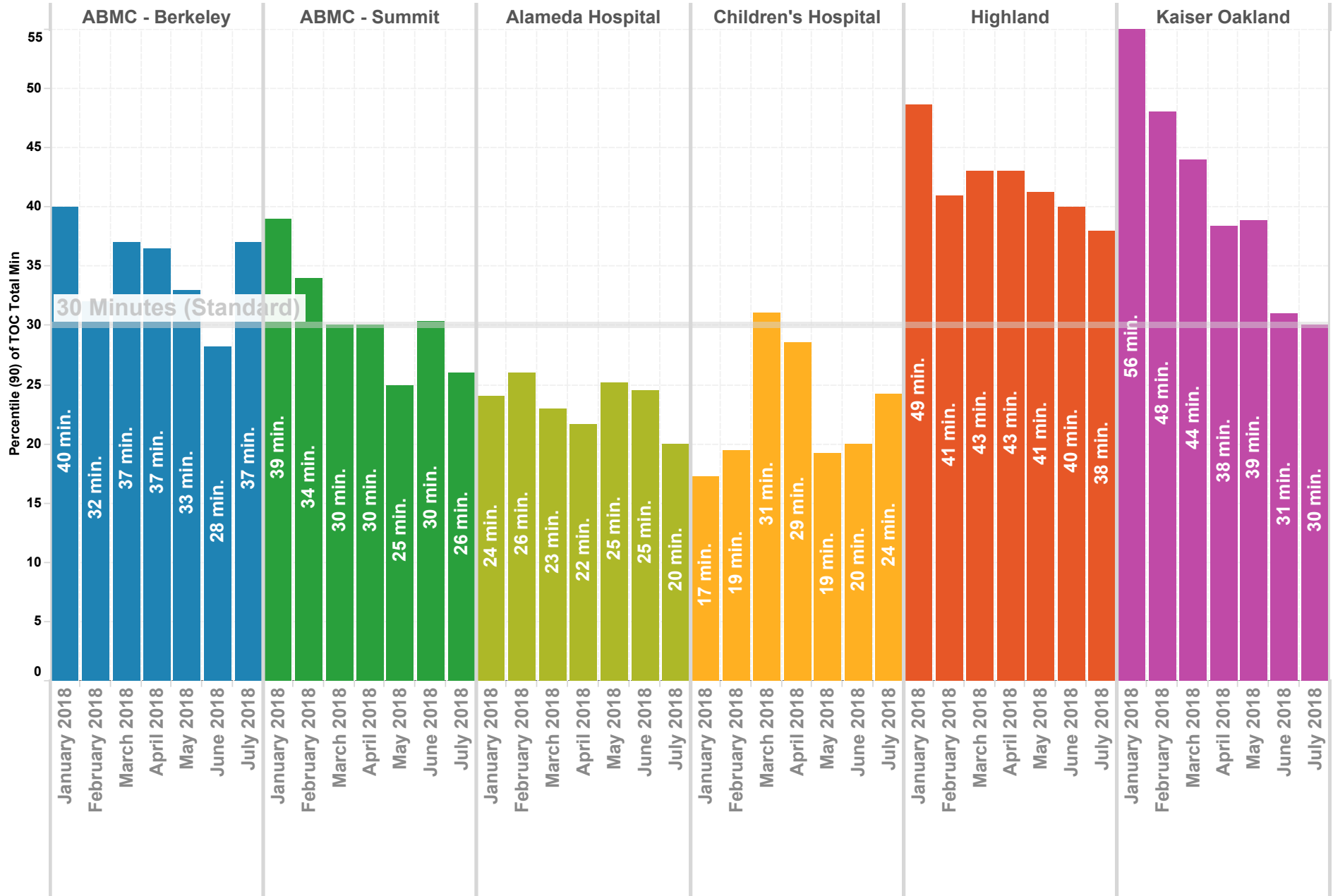
Ambulance Patient Offload Times (APOT) July 2018 90th Percentile

NOTE: The **90th percentile** is the value for which 90% of the data points are smaller.



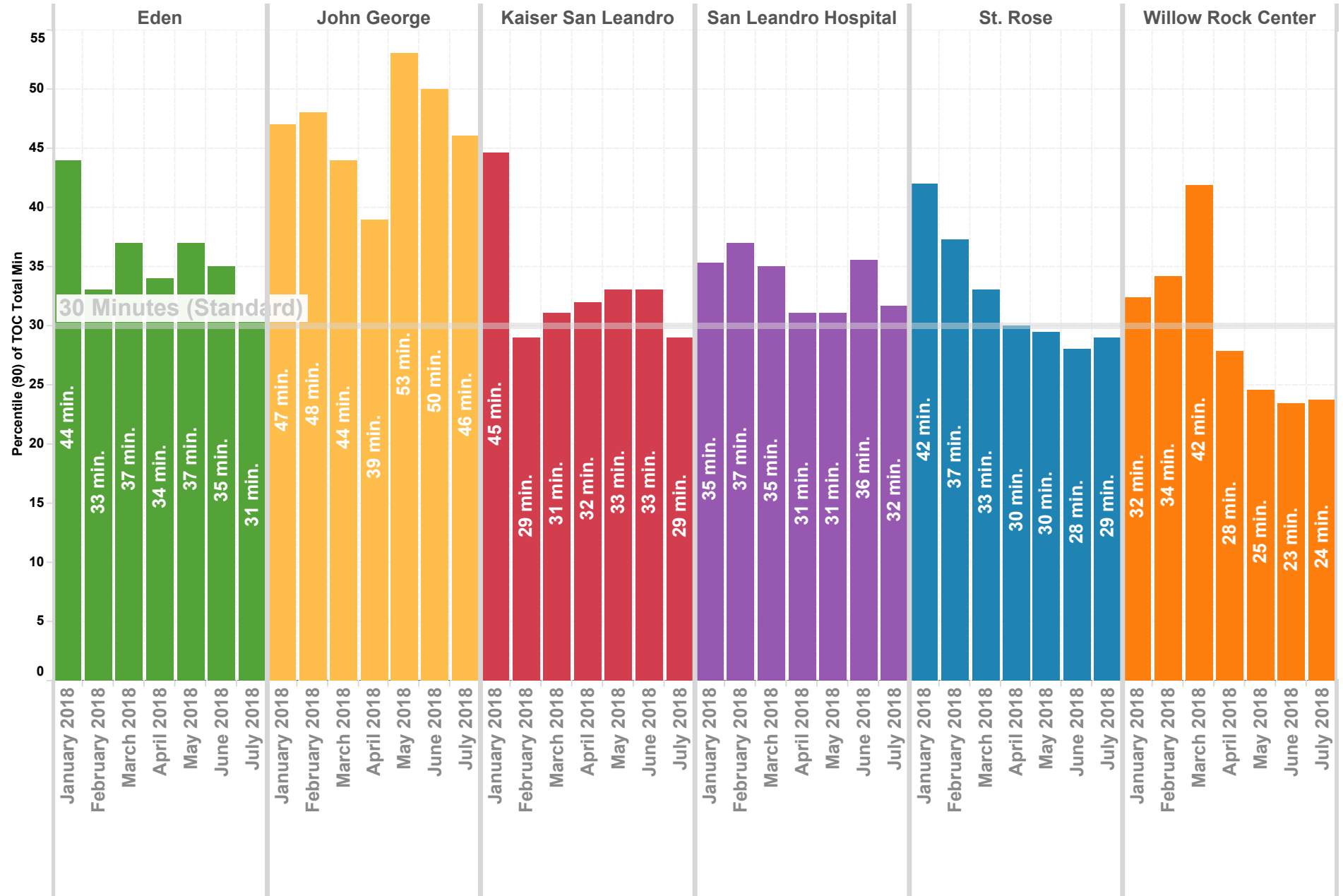
Wall Times (TOC) 2016 By Month - North County

Previous 8 Months | 90th Percentile



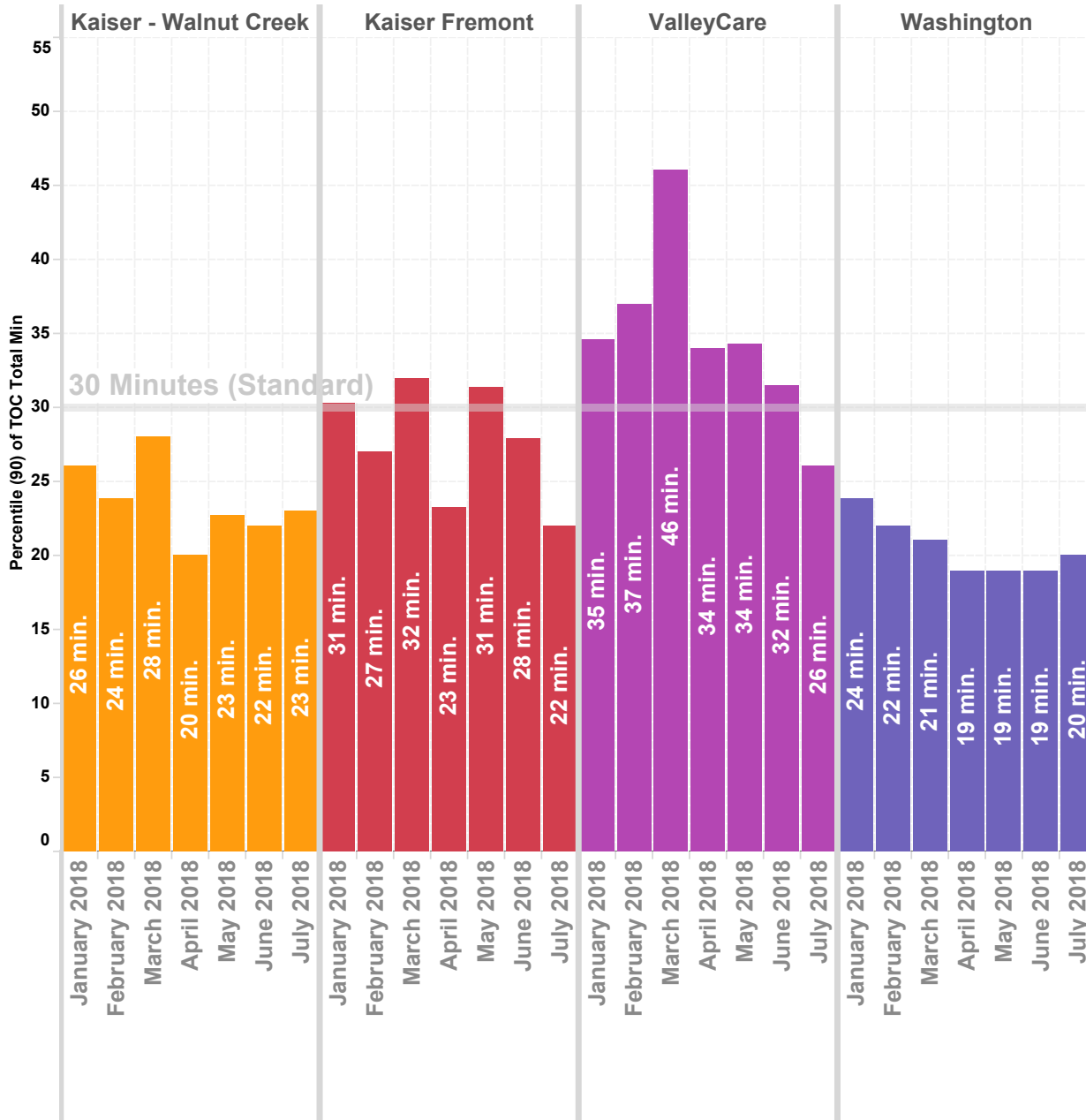
Wall Times (TOC) 2016 By Month - Mid County

Previous 8 Months | 90th Percentile



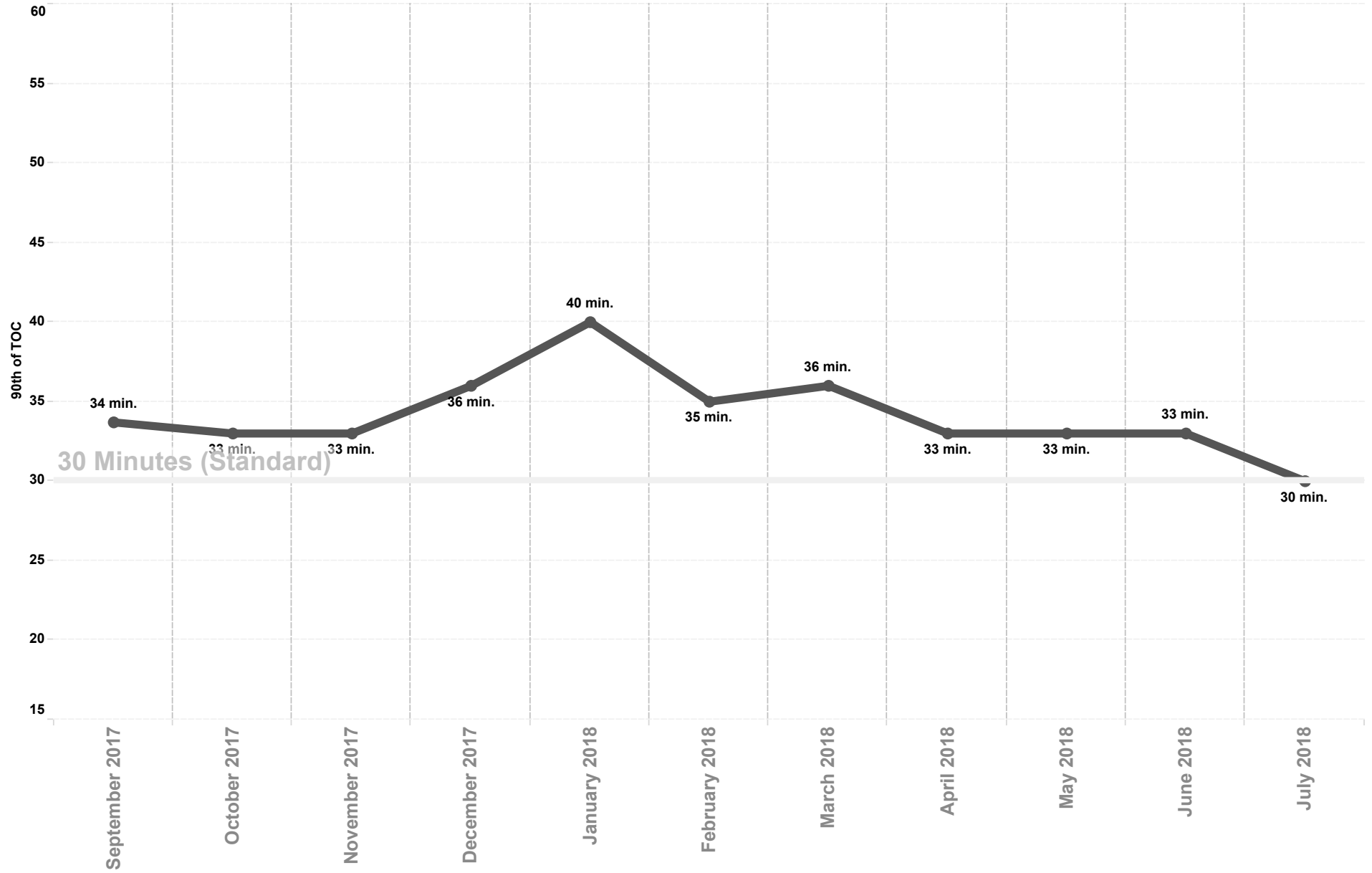
Wall Times (TOC) 2016 By Month - East County & South County

Previous 8 Months | 90th Percentile



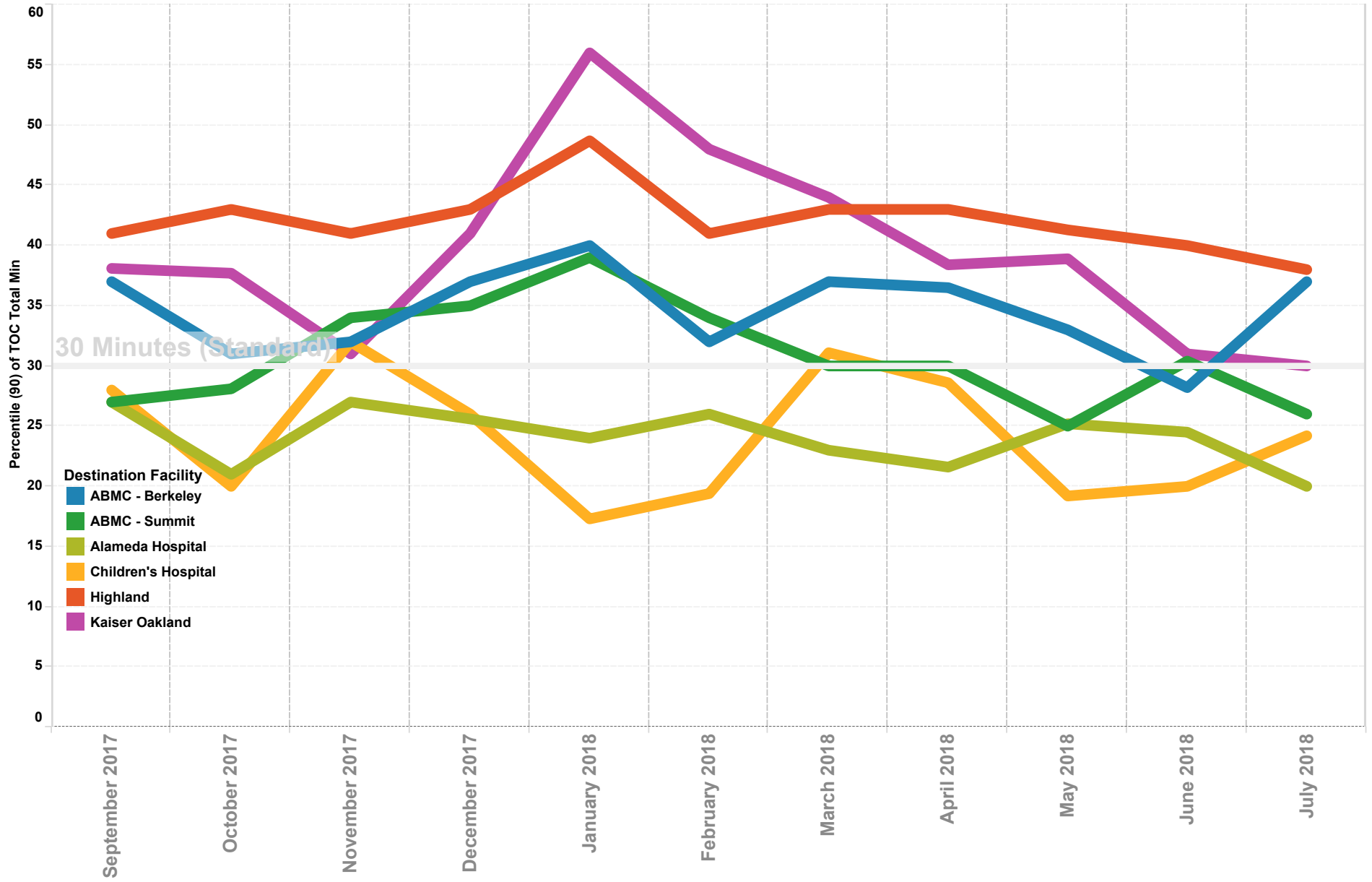
APOT All Hospitals

Previous 12 Months | 90th Percentile



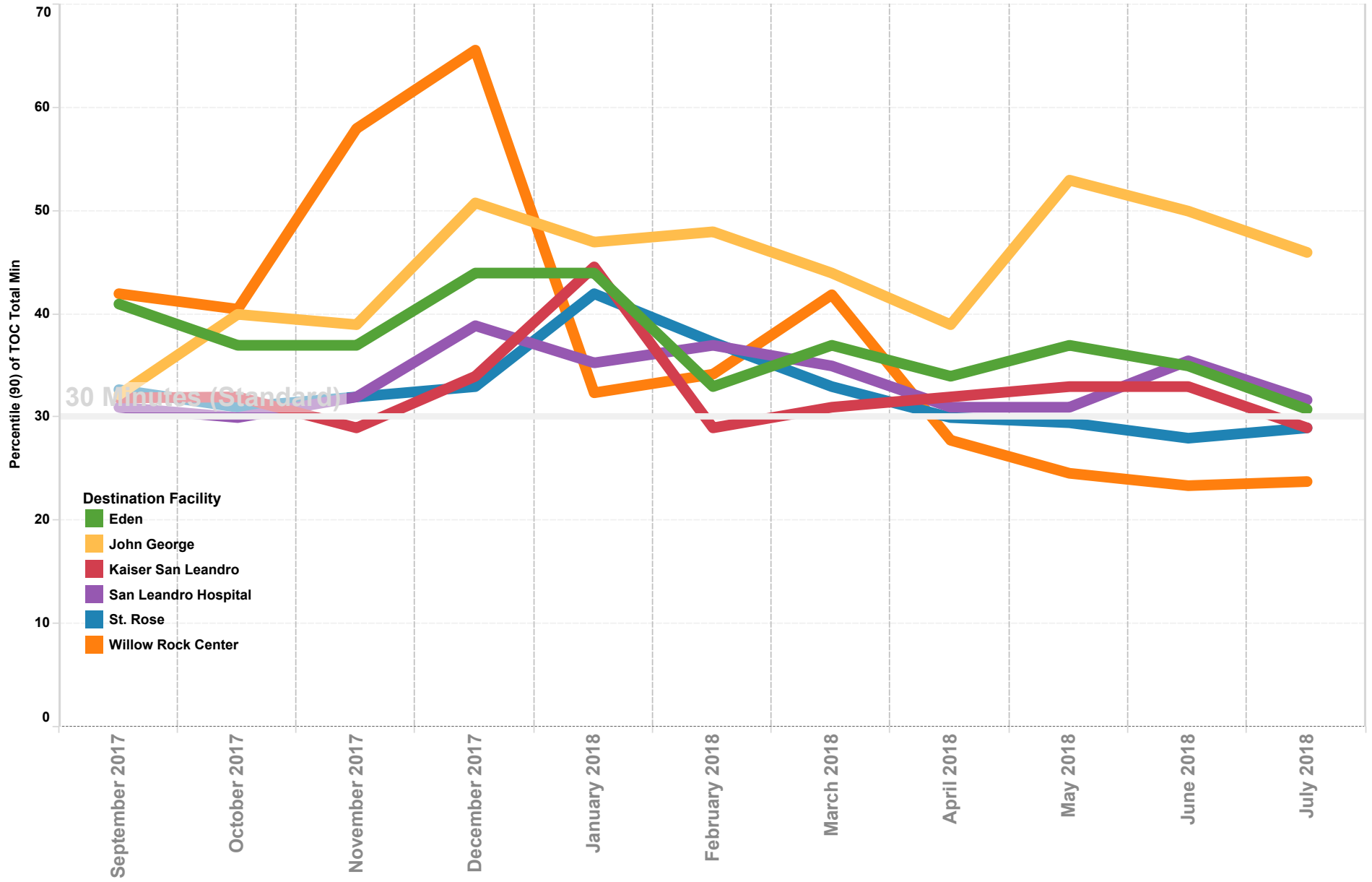
APOT North County

Previous 12 Months | 90th Percentile



APOT Mid County

Previous 12 Months | 90th Percentile



APOT South and East County

Previous 12 Months | 90th Percentile

